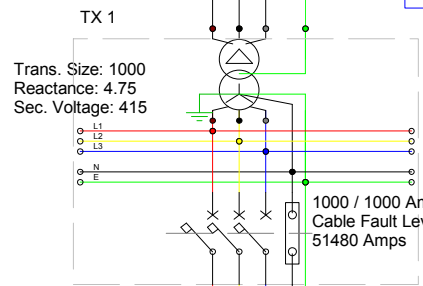
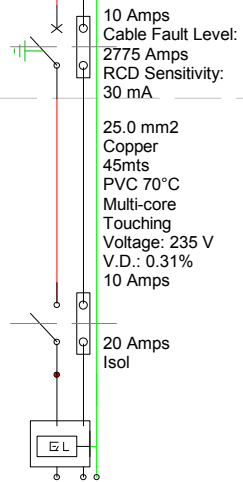
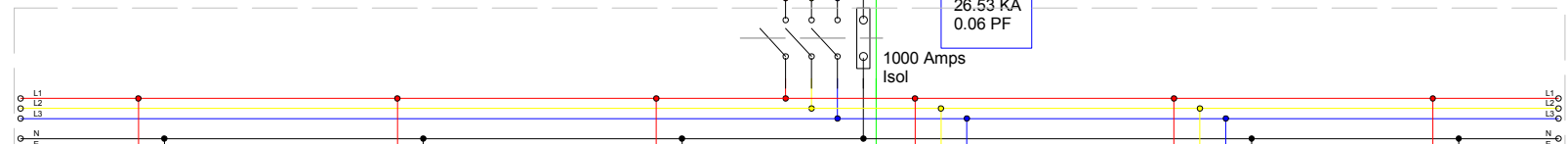


Short Circuit Currents  
21.05 MVA  
29288.54 Amps  
1391.21 F.L.C.

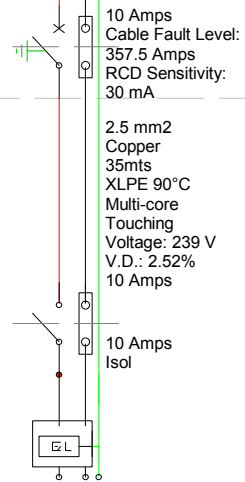


120.0 mm2  
Copper  
12mts  
XLPE 90°C  
Singles  
Parallel Cores: 3  
Buried Directed  
Voltage: 415 V  
V.D.: 0.34%  
950 Amps

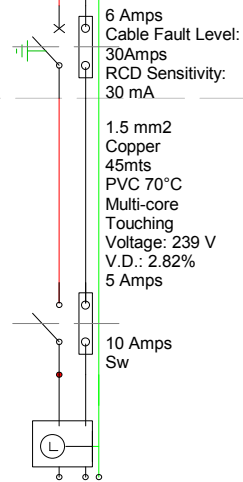
S.C.C.  
19.07 MVA  
26.53 KA  
0.06 PF



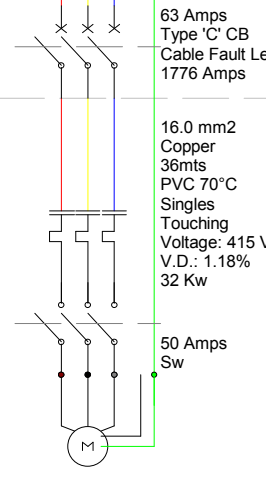
POWER 1



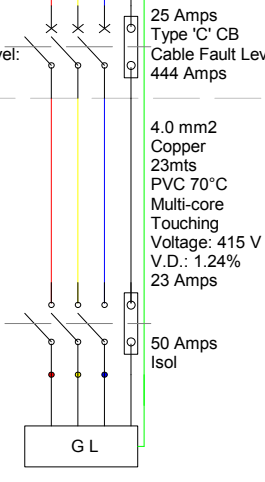
POWER 2



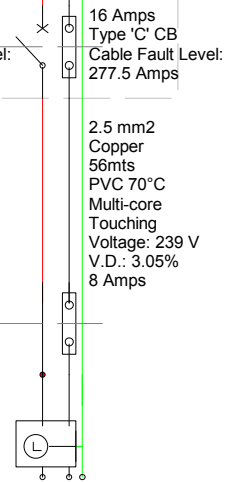
LIGHTS 1



PUMP 1



circuit 2



circuit 3